



Noise Monitoring Result

Day Time (0700 - 1900hrs on normal weekdays)

Location: M1a - Harbour Road Sports Centre

Date	Time	Weather	Measurement Noise Level			Baseline Level	Construction Noise Level	Limit Level
			Leq	L10	L90	Leq	Leq	Leq
Unit: dB(A), (30-min)								
03/03/15	10:26	Cloudy	74.7	77.0	69.5	72	71	75
10/03/15	13:10	Fine	72.7	75.0	69.0	72	63	75
16/03/15	11:01	Cloudy	71.6	74.0	66.5	72	72	75
24/03/15	16:36	Fine	72.2	74.5	68.0	72	72	75

Location: M2b - Noon-day gun area

Date	Time	Weather	Measurement Noise Level			Baseline Level	Construction Noise Level	Limit Level
			Leq	L10	L90	Leq	Leq	Leq
Unit: dB(A), (30-min)								
03/03/15	11:08	Cloudy	69.7	71.0	67.5	68	66	75
09/03/15	15:13	Fine	68.9	70.0	66.0	68	63	75
17/03/15	8:00	Cloudy	66.6	68.3	64.0	68	67	75
26/03/15	11:00	Cloudy	69.0	69.5	66.0	68	63	75

Location: M3a - Tung Lo Wan Fire Station

Date	Time	Weather	Measurement Noise Level			Baseline Level	Construction Noise Level	Limit Level
			Leq	L10	L90	Leq	Leq	Leq
Unit: dB(A), (30-min)								
03/03/15	13:00	Cloudy	65.6	66.5	64.0	69	66	75
10/03/15	9:00	Fine	65.5	66.5	63.0	69	66	75
17/03/15	8:40	Cloudy	69.3	70.5	67.1	69	60	75
26/03/15	13:00	Cloudy	65.4	66.5	64.0	69	65	75

Location: M4b - Victoria Centre

Date	Time	Weather	Measurement Noise Level			Baseline Noise Level	Construction Noise Level	Limit Level
			Leq	L10	L90	Leq	Leq	Leq
Unit: dB(A), (30min)								
03/03/15	13:44	Cloudy	67.5	69.5	64.0	67	54	75
10/03/15	9:37	Fine	66.1	67.5	62.5	67	66	75
17/03/15	9:15	Cloudy	66.8	68.5	63.0	67	67	75
26/03/15	13:40	Cloudy	67.0	68.0	65.0	67	67	75

Location: M5b - City Garden

Date	Time	Weather	Measurement Noise Level			Baseline Level	Construction Noise Level	Limit Level
			Leq	L10	L90	Leq	Leq	Leq
Unit: dB(A), (30min)								
03/03/15	14:27	Cloudy	68.7	71.5	65.0	68	60	75
10/03/15	10:19	Fine	73.1	75.5	65.5	68	71	75
17/03/15	9:58	Cloudy	65.9	67.5	64.0	68	66	75
26/03/15	14:20	Cloudy	70.6	74.0	65.5	68	67	75

Location: M6 - HK Baptist Church Henrietta Secondary School

Date	Time	Weather	Measurement Noise Level			Baseline Level	Construction Noise Level	Limit Level
			Leq	L10	L90	Leq	Leq	Leq
Unit: dB(A), (30-min)								
03/03/15	15:10	Cloudy	72.2	73.0	70.5	71	67	70
10/03/15	11:10	Fine	72.7	73.5	71.0	71	68	70
17/03/15	10:37	Cloudy	72.1	73.5	70.0	71	67	70
26/03/15	15:00	Cloudy	72.2	73.0	70.0	71	67	70



Noise Monitoring Result

Day Time (0700 - 1900hrs on normal weekdays)

Location: M7e - International Finance Centre (Eastern End of Podium) (Reference Station)

Date	Time	Weather	Measurement Noise Level			Baseline Level	Construction Noise Level	Limit Level
			Leq	L10	L90	Leq	Leq	Leq
Unit: dB(A), (30-min)								
03/03/15	8:23	Cloudy	66.8	68.0	63.5	67	67	N/A
09/03/15	9:07	Fine	69.2	71.0	64.0	67	65	N/A
16/03/15	9:00	Cloudy	66.9	68.5	64.0	67	50	N/A
26/03/15	9:40	Cloudy	69.9	71.0	67.5	67	67	N/A

Location: M7w - International Finance Centre (Western End of Podium)

Date	Time	Weather	Measurement Noise Level			Baseline Level	Construction Noise Level	Limit Level
			Leq	L10	L90	Leq	Leq	Leq
Unit: dB(A), (30-min)								
03/03/15	8:58	Cloudy	64.8	65.5	63.0	69	65	75
09/03/15	9:41	Fine	65.2	66.5	62.5	69	65	75
16/03/15	9:34	Cloudy	65.8	67.5	62.5	69	66	75
26/03/15	10:15	Cloudy	65.2	66.5	62.5	69	65	75

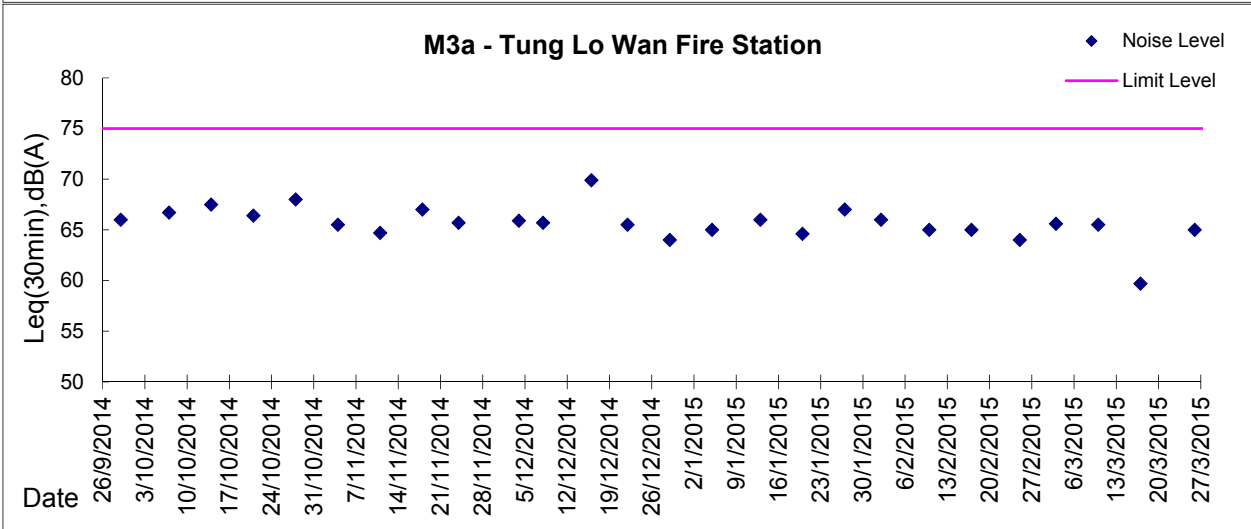
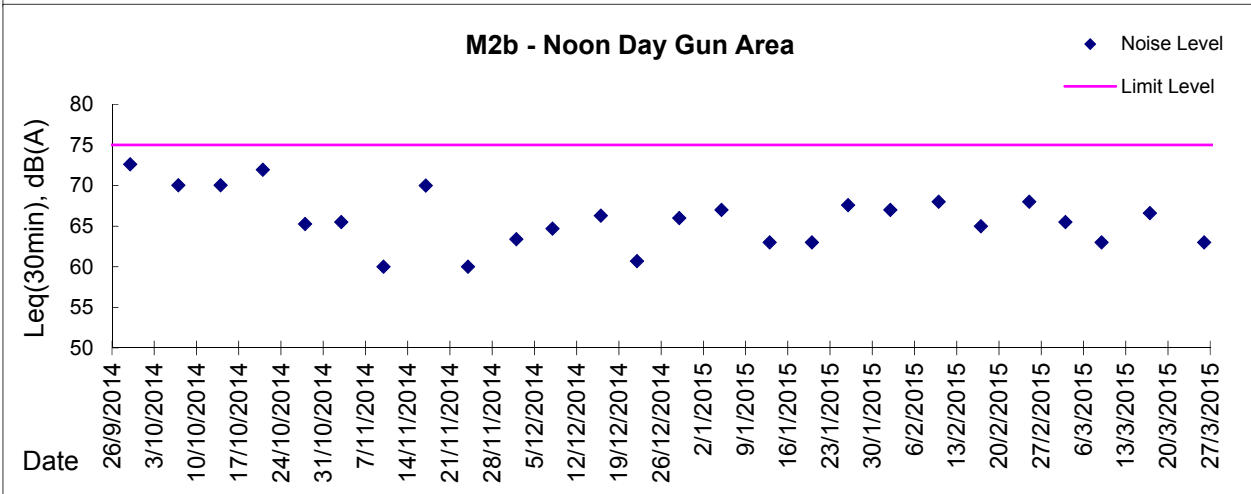
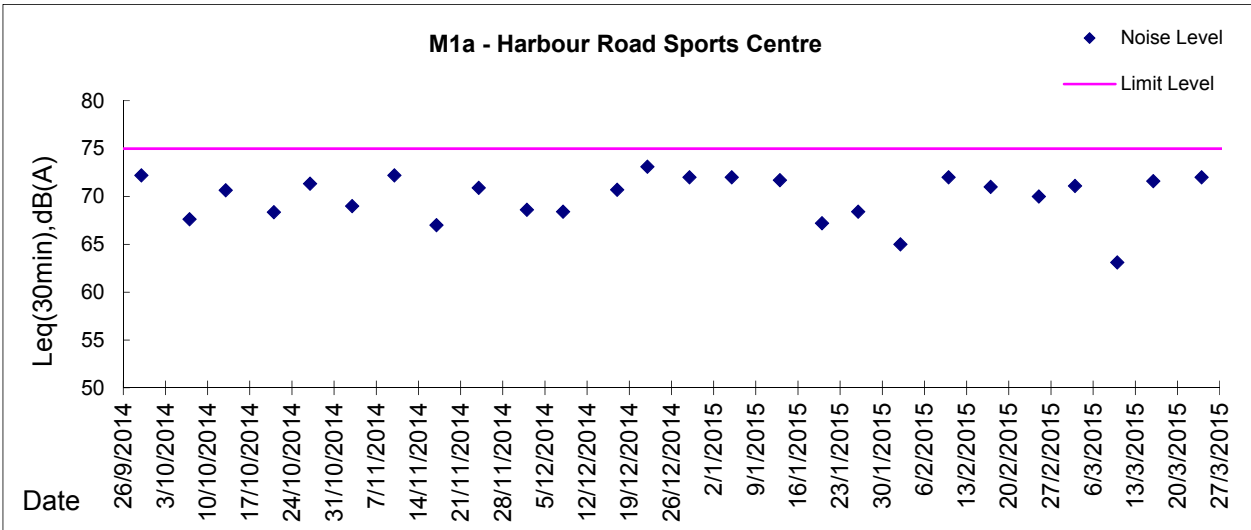
Location: M8 - City Hall

Date	Time	Weather	Measurement Noise Level			Baseline Level	Construction Noise Level	Limit Level
			Leq	L10	L90	Leq	Leq	Leq
Unit: dB(A), (30-min)								
03/03/15	9:35	Cloudy	63.8	66.0	59.0	64	64	70
09/03/15	8:28	Fine	59.5	61.5	56.0	64	60	70
16/03/15	10:19	Cloudy	59.5	61.5	56.0	64	60	70
24/03/15	15:49	Fine	60.1	62.5	56.0	64	60	70



Graphic Presentation of Noise Monitoring Result

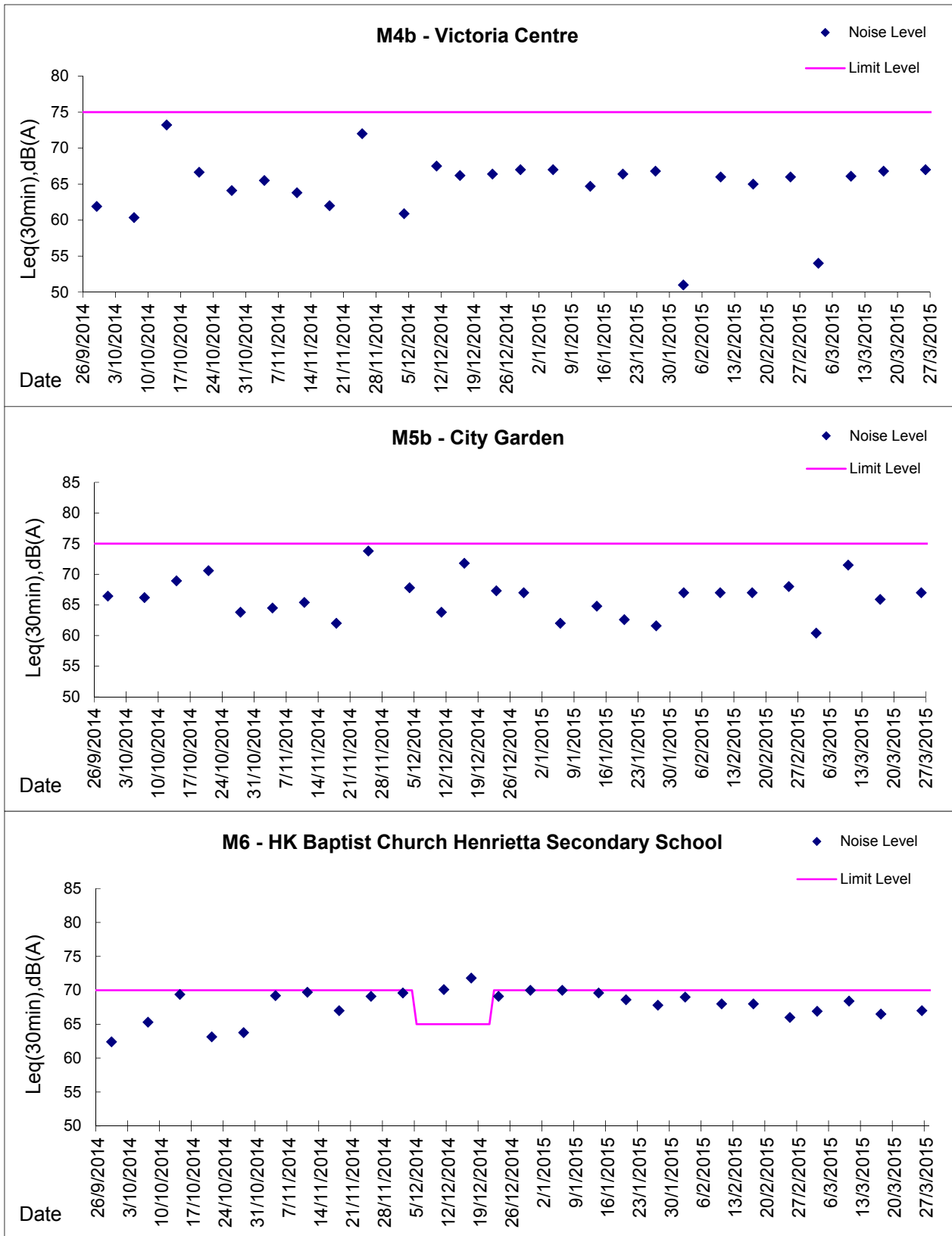
Day Time (0700 - 1900hrs on normal weekdays)





Graphic Presentation of Noise Monitoring Result

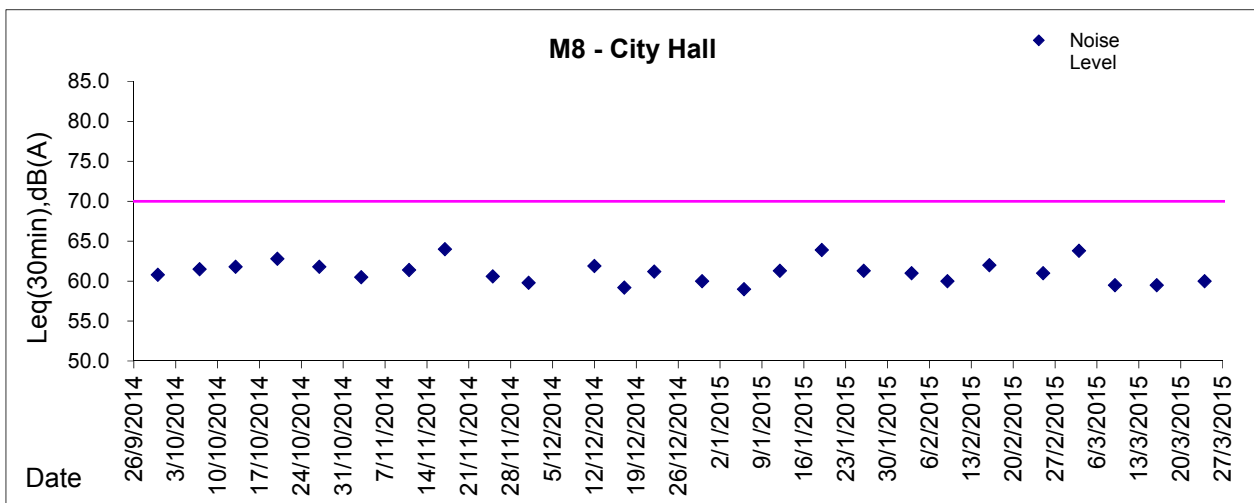
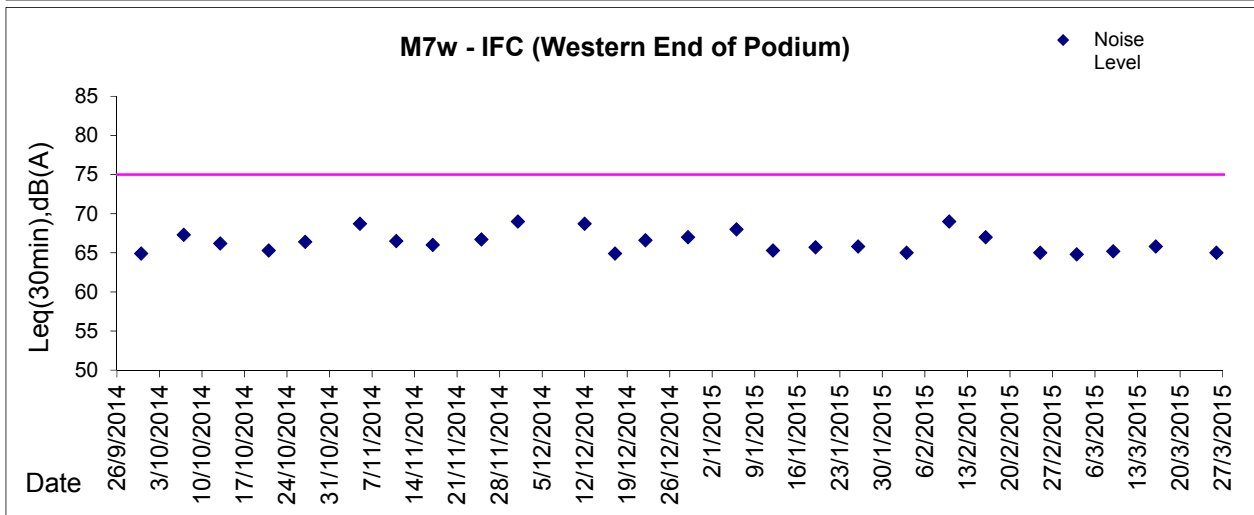
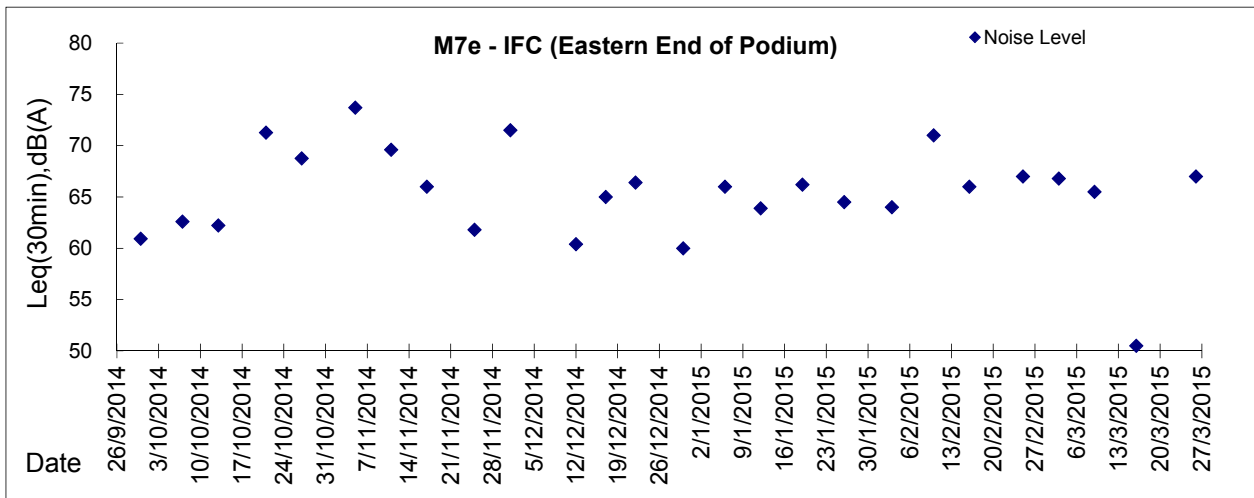
Day Time (0700 - 1900hrs on normal weekdays)





Graphic Presentation of Noise Monitoring Result

Day Time (0700 - 1900hrs on normal weekdays)



* Remark: M7e - IFC (Eastern End of Podium) is a reference monitoring station